



Jordan fishwick

43 Gawsworth Road, Sale, M33 2UZ
Offers Over £300,000



Offices at: Chorlton, Didsbury, Disley, Hale, Glossop, Maclefield, Manchester Deansgate, Manchester Whitworth Street, New Mills, Sale, Wilmslow and Withington

These particulars are believed to be accurate but they are not guaranteed and do not form a contract. Neither Jordan Fishwick nor the vendor or lessor accept any responsibility in respect of these particulars, which are not intended to be statements or representations of fact and any intending purchaser or lessee must satisfy himself by inspection or otherwise as to the correctness of each of the statements contained in these particulars. Any floorplans on this brochure are for illustrative purposes only and are not necessarily to scale.

43 Gawsworth Road, Sale, M33 2UZ

NEWLY UPGRADED PROPERTY - New kitchen, new bathroom, new roof, new boiler! IMMEDIATELY AVAILABLE - Situated in a popular location within easy reach of local shopping amenities, excellent transport links including the Metrolink and M60 Motorway network and close to the Outstanding Lime Tree Primary Academy and Sale High School. In brief the accommodation comprises: entrance hall, spacious living room, modern fitted kitchen which is open to a dining area. To the first floor there are three bedrooms two of which are well proportioned double bedrooms and the third being a larger than average single. There is also a modern tiled bathroom fitted with four piece suite. Externally, to the front a pressed concrete driveway offering parking for two or three cars. To the rear a large well maintained garden which is mainly laid to lawn, enclosed by timber fences, with an attractive pressed concrete seating area ideal for dining during the summer months. Access to a WC and large storage room with electricity supply and window for natural light. NO CHAIN!

Hall
Entrance hall accessed via UPVC door.

Lounge
15'3" x 11'5"
Reception room with log burner creating a focal point to the room, UPVC window to the front aspect, carpeted flooring, radiator, ceiling and wall light points.
Dining Room
10'3" x 9'0"
Dining room with laminate flooring, UPVC window to the front aspect, ceiling light point, radiator. Open plan to the kitchen.

Kitchen
8'11" x 7'7"
Fitted with a good range of eye level and base units, integrated appliances include electric oven, induction hob, extractor hood and fridge freezer.

First Floor
Carpeted stairs to:
Master Bedroom
14'7" x 10'4"
Access to useful under stairs storage cupboard.

Bedroom Three
8'5" x 7'10"
Third bedroom with UPVC window to the rear aspect, carpeted flooring, ceiling light point and radiator. Storage cupboard housing the boiler, approx 2 years old.

Bedroom Two
12'8" x 10'11"
Another double bedroom with UPVC window to the front aspect, carpeted flooring, radiator and spot lighting.



Bedroom One
10'9" x 5'5"
Modern tiled bathroom suite with bathtub, cubic shower, vanity unit with inset window to the rear aspect.
Loft
Pull down ladders for access, boarded and fitted with light.
Externally
To the front a pressed concrete driveway offering parking for two or three cars. To the rear a large well maintained garden which is mainly laid to lawn, enclosed by timber fences, with an attractive pressed concrete seating area ideal for dining during the summer months. Access to the WC and large storage room (4.4 x 1.8 m) with electricity supply and window for natural light.



Bedroom One
10'9" x 5'5"
Modern tiled bathroom suite with bathtub, cubic shower, vanity unit with inset window to the rear aspect.
Loft
Pull down ladders for access, boarded and fitted with light.
Externally
To the front a pressed concrete driveway offering parking for two or three cars. To the rear a large well maintained garden which is mainly laid to lawn, enclosed by timber fences, with an attractive pressed concrete seating area ideal for dining during the summer months. Access to the WC and large storage room (4.4 x 1.8 m) with electricity supply and window for natural light.

Bedroom Three
8'5" x 7'10"
Third bedroom with UPVC window to the rear aspect, carpeted flooring, ceiling light point and radiator. Storage cupboard housing the boiler, approx 2 years old.

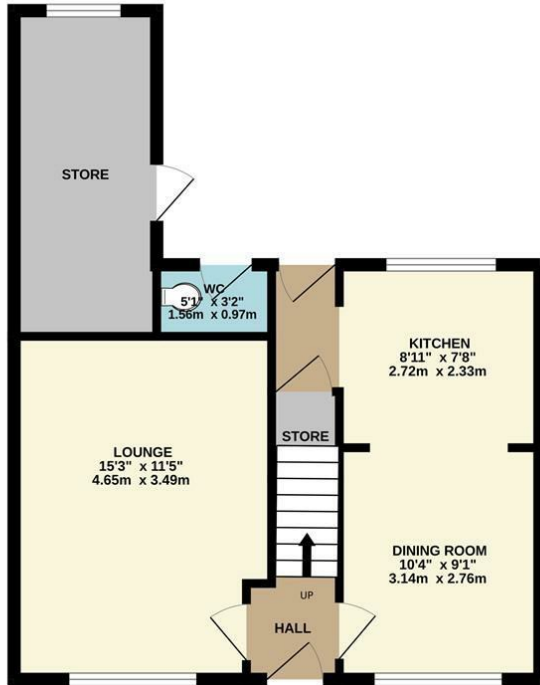
Bedroom Two
12'8" x 10'11"
Another double bedroom with UPVC window to the front aspect, carpeted flooring, radiator and spot lighting.

Bedroom One
10'9" x 5'5"
Modern tiled bathroom suite with bathtub, cubic shower, vanity unit with inset window to the rear aspect.
Loft
Pull down ladders for access, boarded and fitted with light.
Externally
To the front a pressed concrete driveway offering parking for two or three cars. To the rear a large well maintained garden which is mainly laid to lawn, enclosed by timber fences, with an attractive pressed concrete seating area ideal for dining during the summer months. Access to the WC and large storage room (4.4 x 1.8 m) with electricity supply and window for natural light.

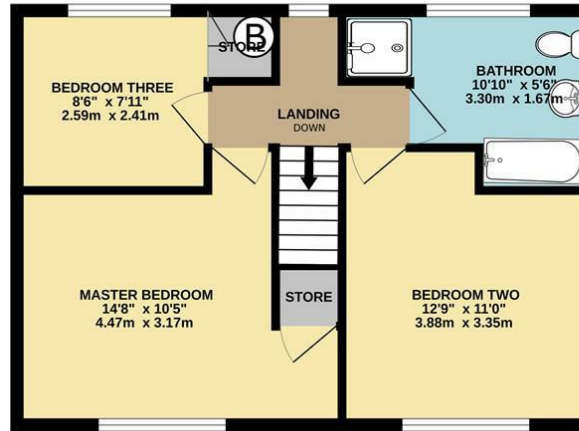


Offers Over £300,000

GROUND FLOOR
503 sq.ft. (46.7 sq.m.) approx.



1ST FLOOR
470 sq.ft. (43.7 sq.m.) approx.



TOTAL FLOOR AREA : 973 sq.ft. (90.4 sq.m.) approx.
Measurements are approximate. Not to scale. Illustrative purposes only
Made with Metropix ©2023



Energy Efficiency Rating		
	Current	Potential
Very energy efficient - lower running costs		
(92 plus) A		
(81-91) B		84
(69-80) C	72	
(55-68) D		
(39-54) E		
(21-38) F		
(1-20) G		
Not energy efficient - higher running costs		
England & Wales	EU Directive 2002/91/EC	

These particulars are believed to be correct but they are not guaranteed and do not form a contract. Neither Jordon Fishwick nor the vendor or lessor accept any responsibility in respect of these particulars, which are intended to be statements or representation of fact and any intending purchaser or lessee must satisfy himself by inspection or otherwise as to the correctness of each of the statements contained in these particulars. Any floorplans on this brochure are for illustration purposes only and are not necessarily to scale.

